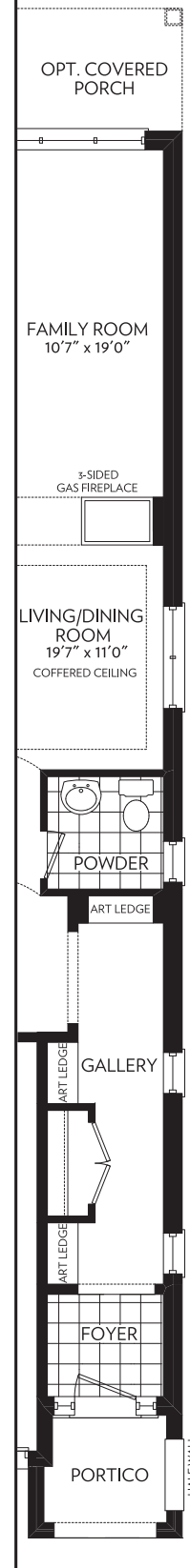
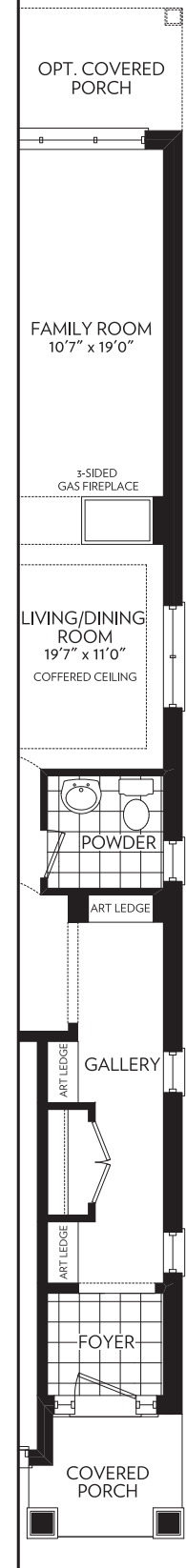


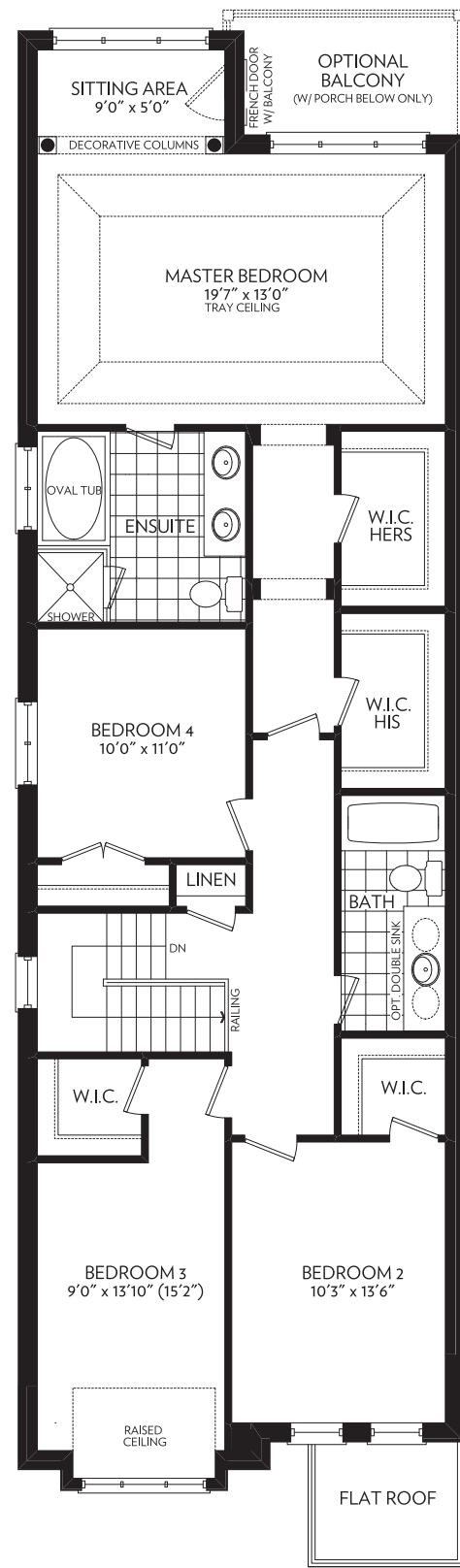
GROUND FLOOR  
ELEVATION A



GROUND FLOOR  
END CONDITION  
PARTIAL  
ELEVATION A



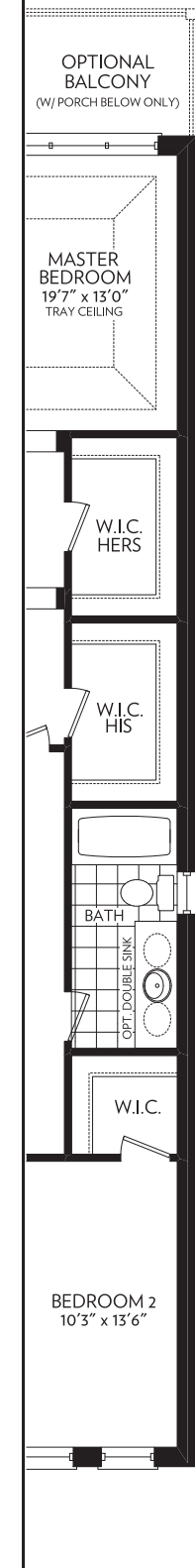
GROUND FLOOR  
END CONDITION  
PARTIAL  
ELEVATION B



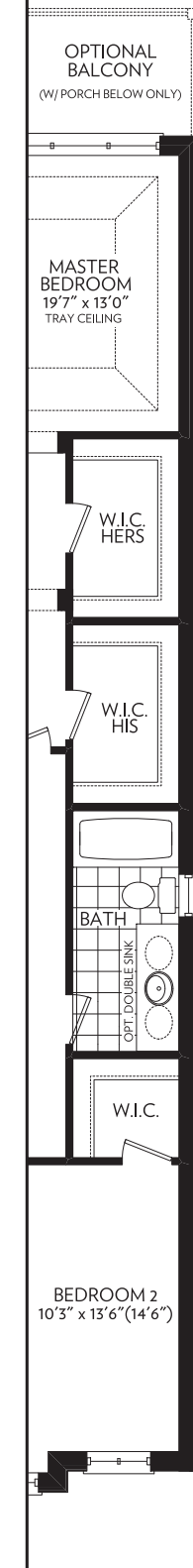
SECOND FLOOR  
ELEVATION A



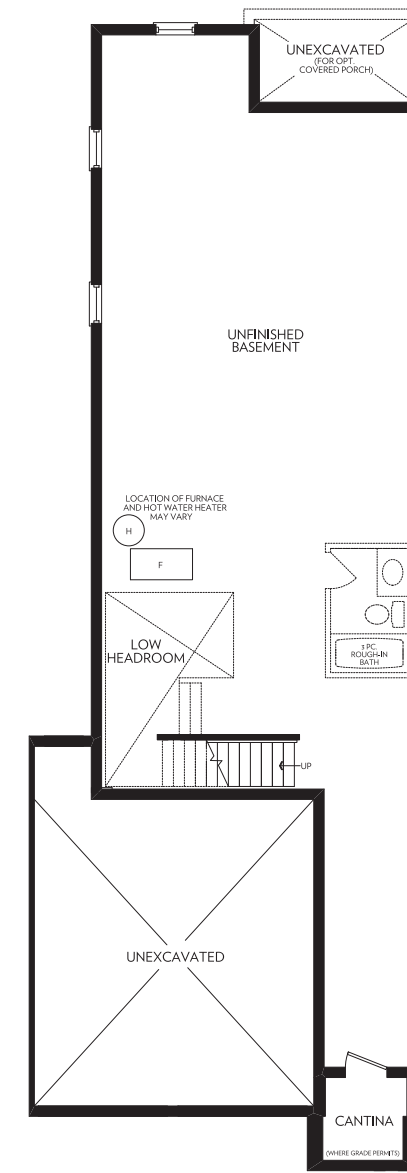
SECOND FLOOR PARTIAL  
ELEVATION B



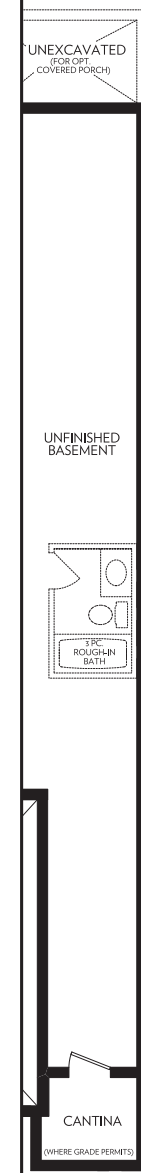
SECOND FLOOR  
END CONDITION  
PARTIAL  
ELEVATION A



SECOND FLOOR  
END CONDITION  
PARTIAL  
ELEVATION B



BASEMENT  
ELEVATION A & B



BASEMENT  
END CONDITION  
PARTIAL  
ELEVATION A & B

ELEVATION A - 2552 SQ. FT.



ELEVATION B - 2554 SQ. FT.



GROUND FLOOR PARTIAL  
ELEVATION B