



ZANCOR  
COOKSTOWN

THE  
**SUTTON**

ELEV. A - 3432 sq.ft.

Elev. A Opt. Second Floor  
w/ Media Room  
3652 sq. ft.

Elevation 'A'



ZANCOR  
COOKSTOWN

THE  
**SUTTON**

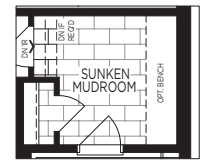
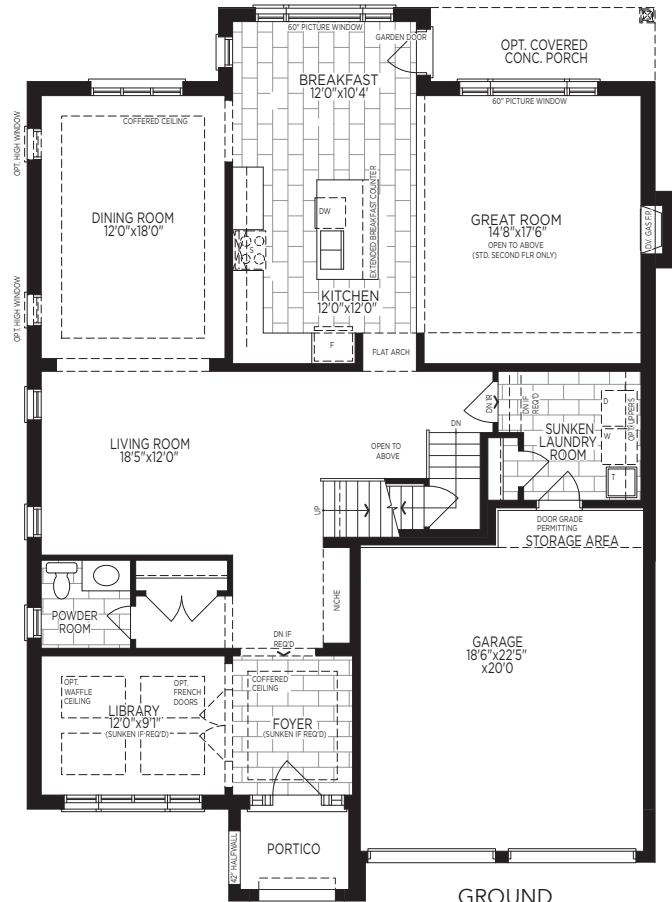
ELEV. B - 3434 sq.ft.

Elev. B Opt. Second Floor  
w/ Media Room  
3654 sq.ft.

Elevation 'B'

# THE SUTTON

Elev. A - 3432 sq.ft. 3652 sq. ft. Opt. Second Floor w/ Media Room  
 Elev. B - 3434 sq.ft. 3654 sq. ft. Opt. Second Floor w/ Media Room



OPT. MUDROOM FOR OPT. SECOND FLOOR

