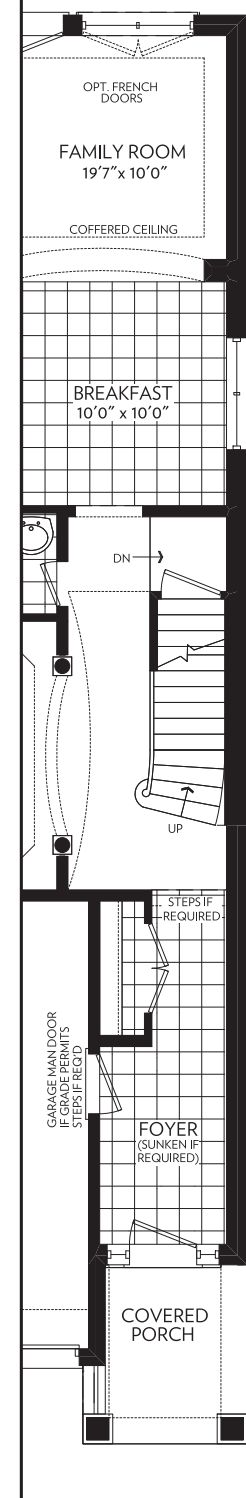
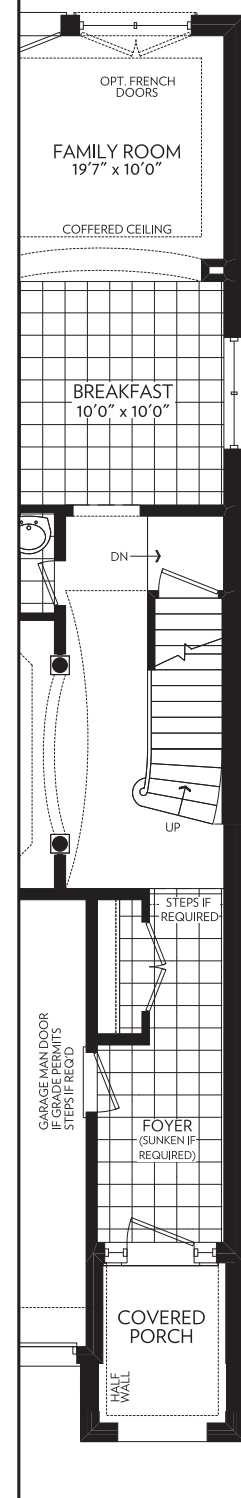


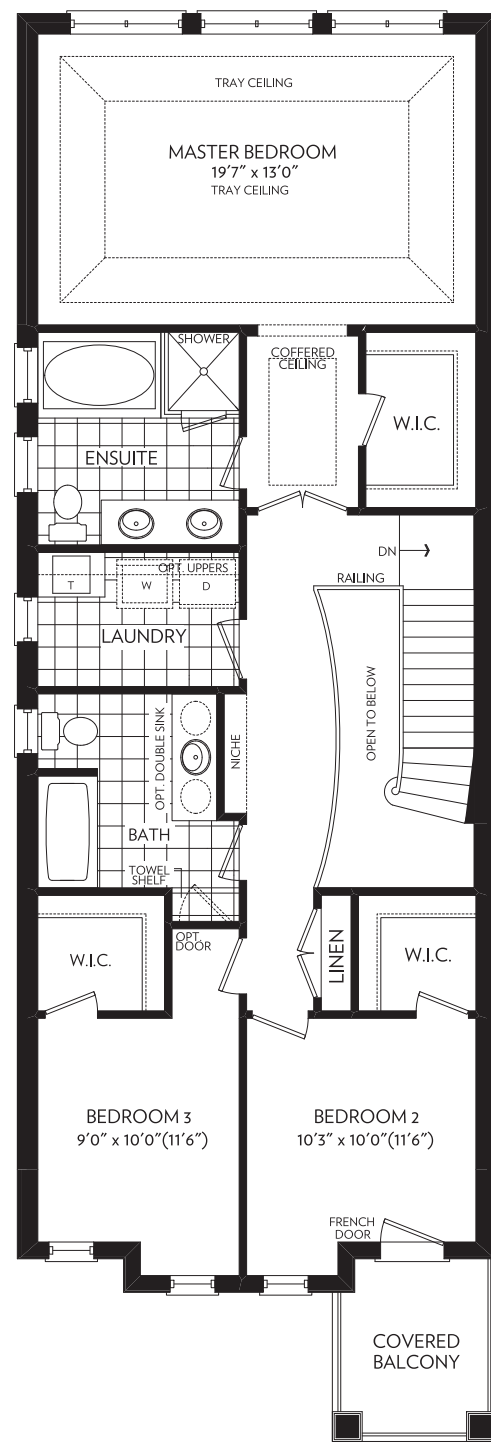
GROUND FLOOR  
ELEVATION A



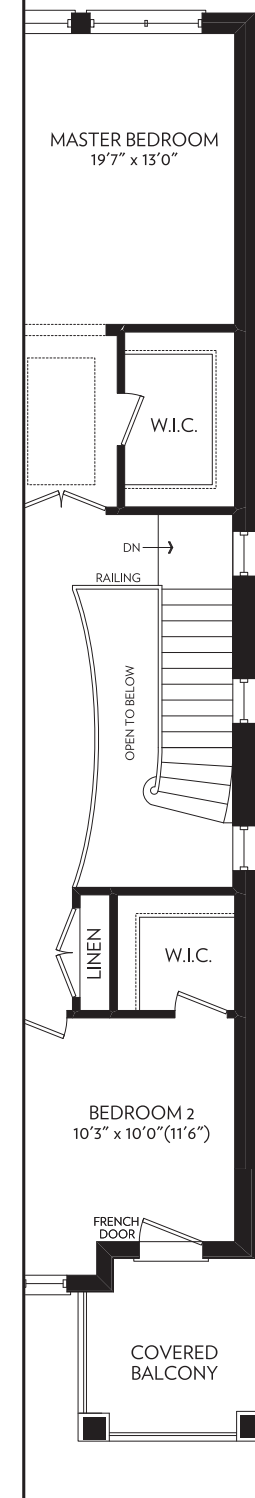
GROUND FLOOR  
END CONDITION  
PARTIAL  
ELEVATION A



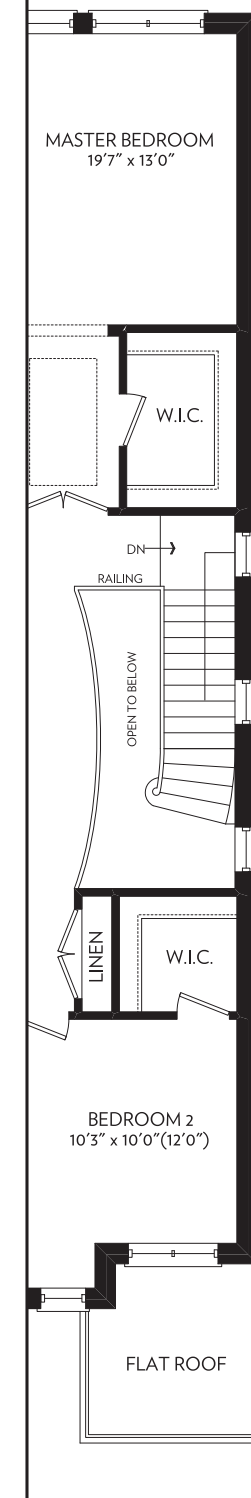
GROUND FLOOR  
END CONDITION  
PARTIAL  
ELEVATION B



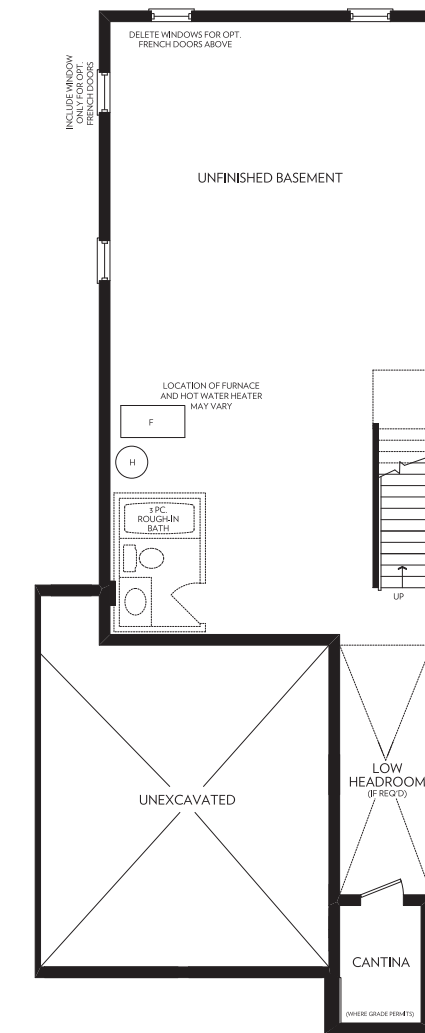
SECOND FLOOR  
ELEVATION A



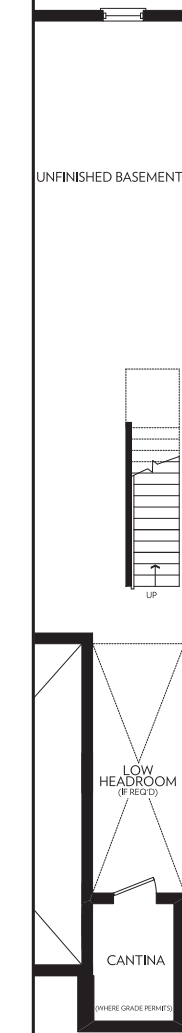
SECOND FLOOR  
END CONDITION  
PARTIAL  
ELEVATION A



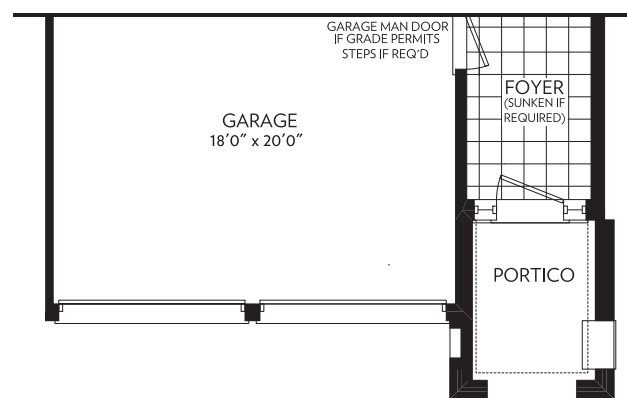
SECOND FLOOR  
END CONDITION  
PARTIAL  
ELEVATION B



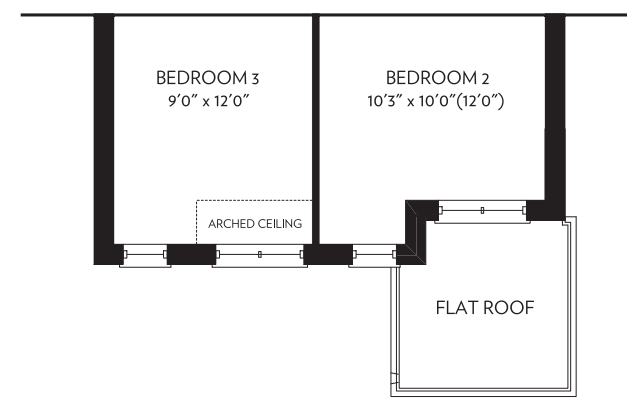
BASEMENT  
ELEVATION A & B



BASEMENT  
END CONDITION  
PARTIAL  
ELEVATION A & B



GROUND FLOOR  
PARTIAL  
ELEVATION B



SECOND FLOOR  
PARTIAL  
ELEVATION B

ELEVATION A - 2111 SQ. FT.



ELEVATION B - 2129 SQ. FT.

