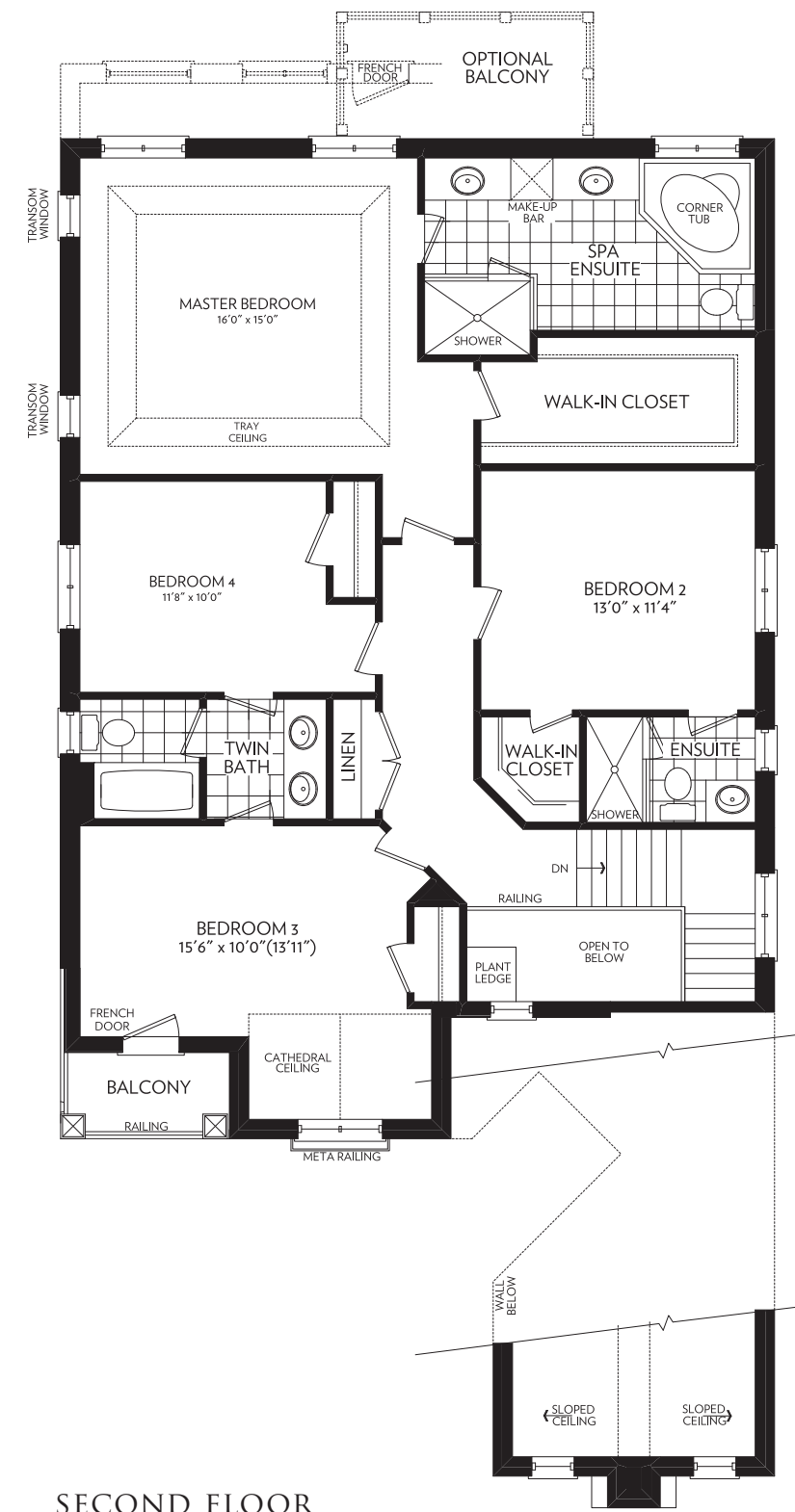
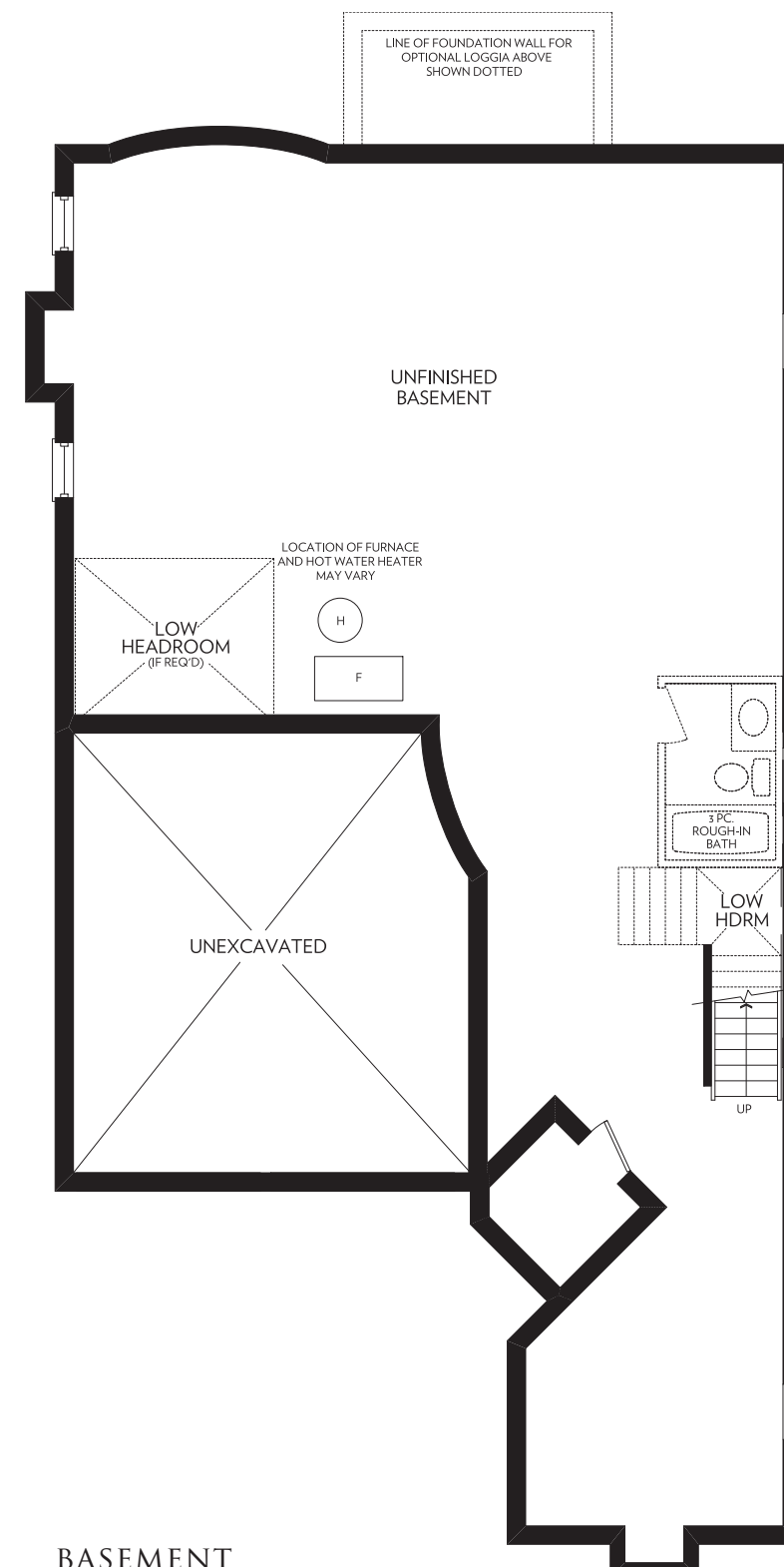


GROUND FLOOR
ELEVATION A

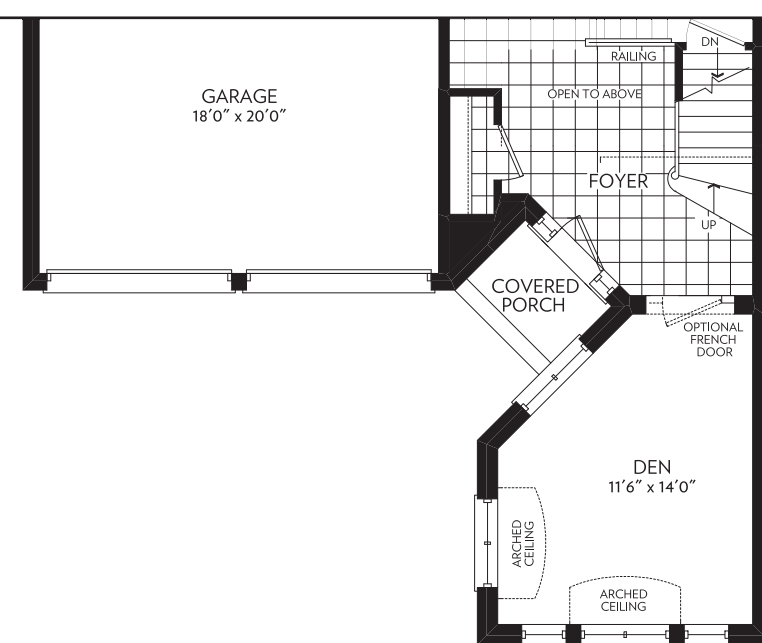


SECOND FLOOR
ELEVATION A

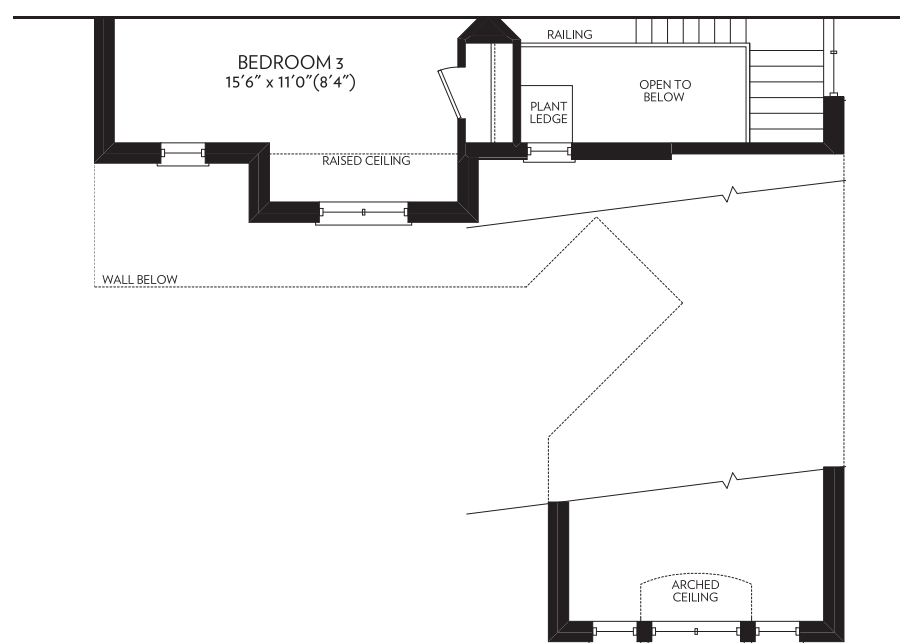


BASEMENT
ELEVATION A

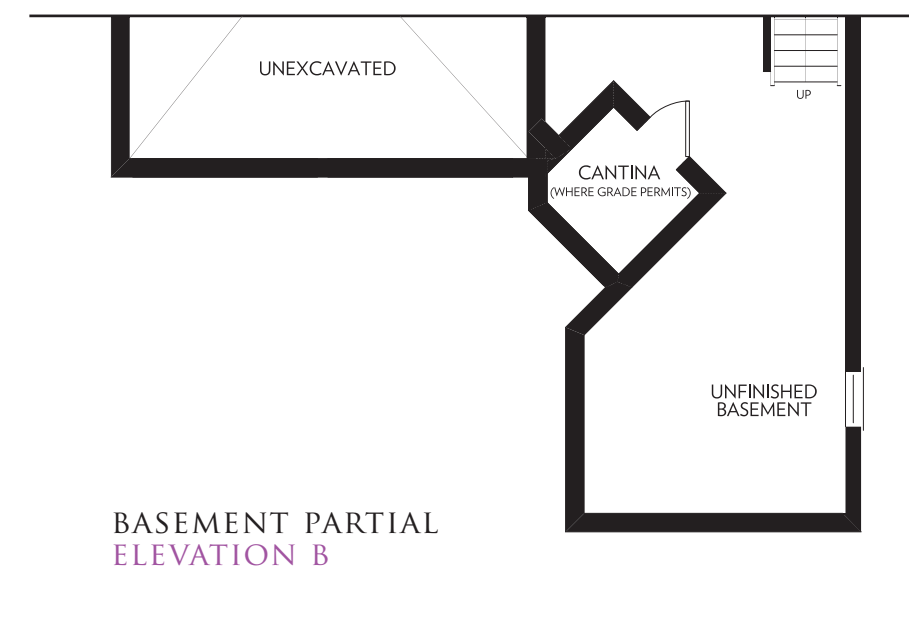
ELEVATION A - 2860 SQ. FT.



GROUND FLOOR PARTIAL
ELEVATION B



SECOND FLOOR PARTIAL
ELEVATION B



BASEMENT PARTIAL
ELEVATION B

ELEVATION B - 2817 SQ. FT.

