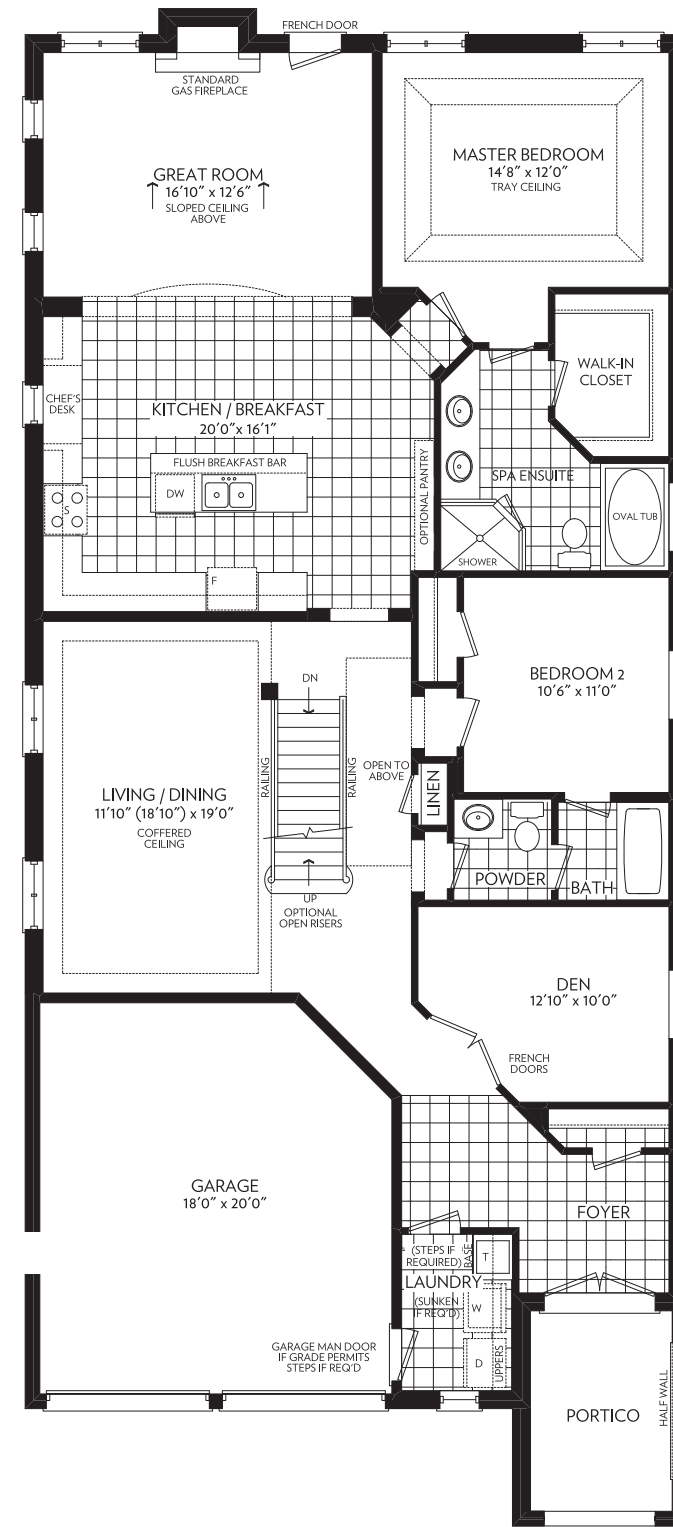
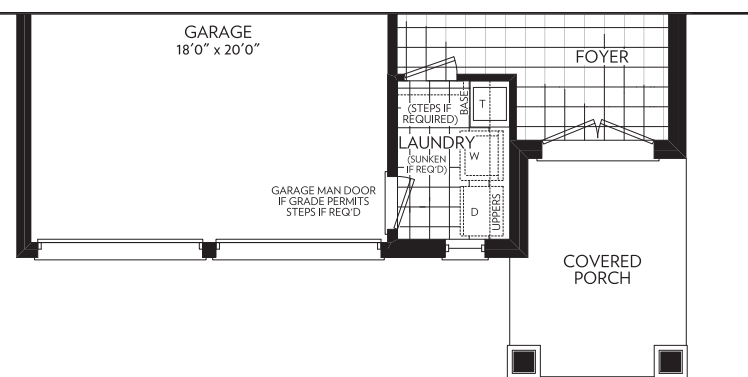


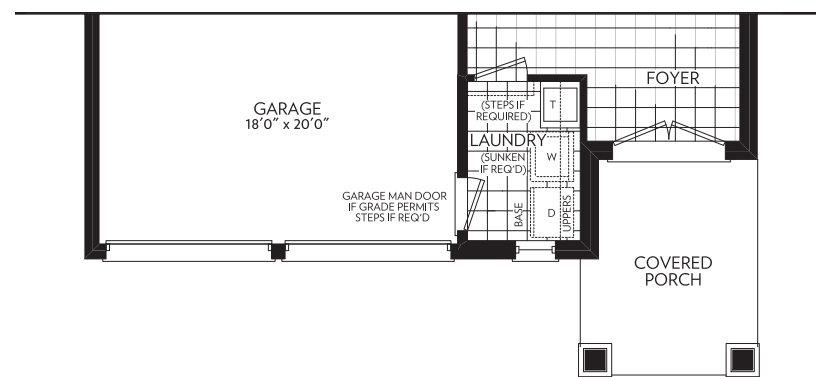
GROUND FLOOR
ELEVATION A



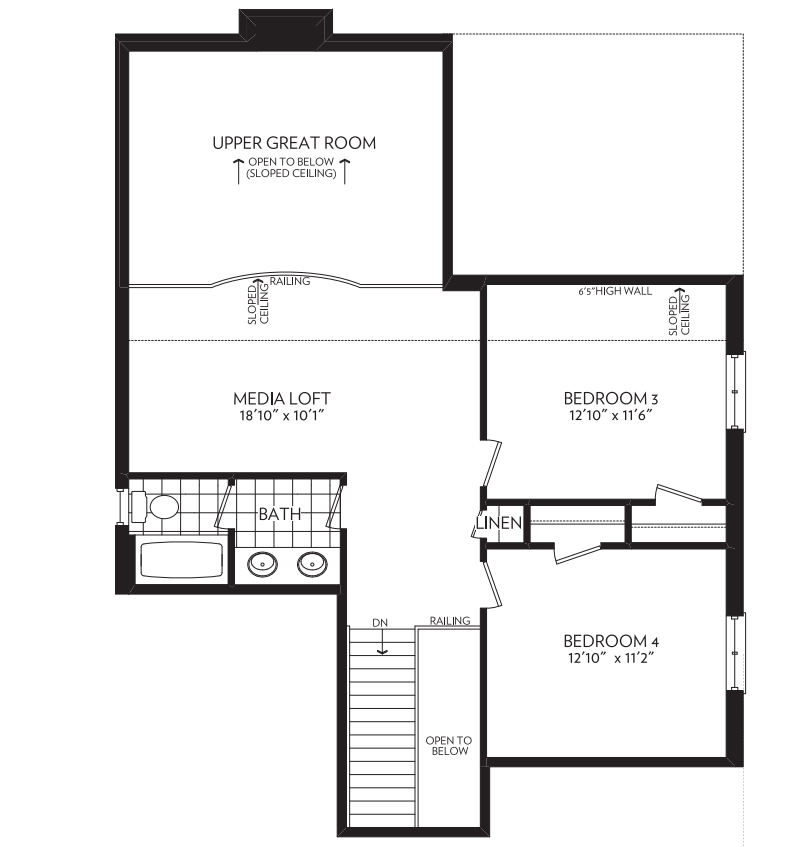
OPT. GROUND FLOOR WITH LOFT
ELEVATION A



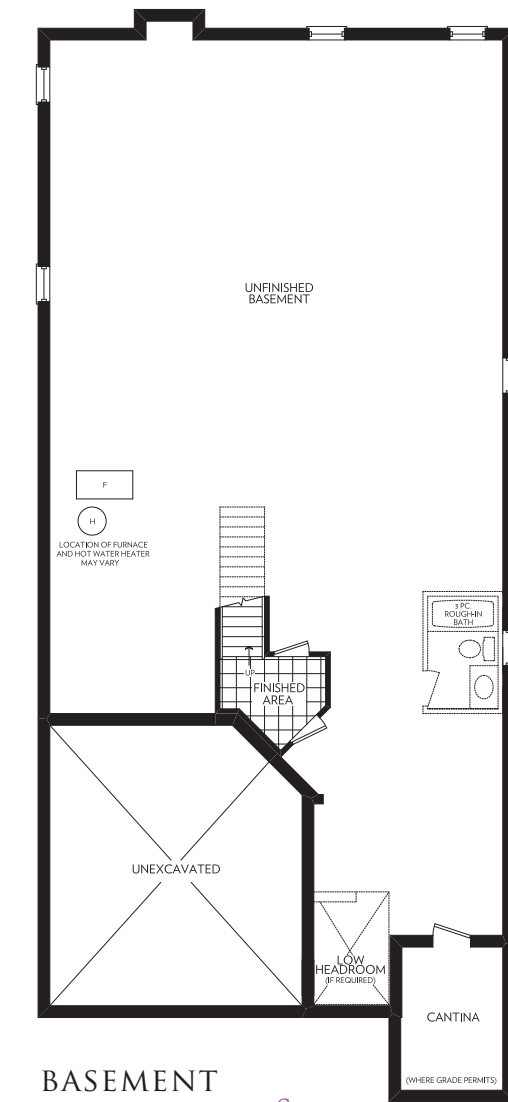
GROUND FLOOR PARTIAL
ELEVATION B



OPT. GROUND FLOOR WITH LOFT PARTIAL
ELEVATION B



ALT. SECOND FLOOR PARTIAL
ELEVATION A



BASEMENT
ELEVATION A & B

ELEVATION A - 2011 SQ. FT./OPT. LOFT - 2780 SQ. FT.



ELEVATION B - 2011 SQ. FT./OPT. LOFT - 2780 SQ. FT.

