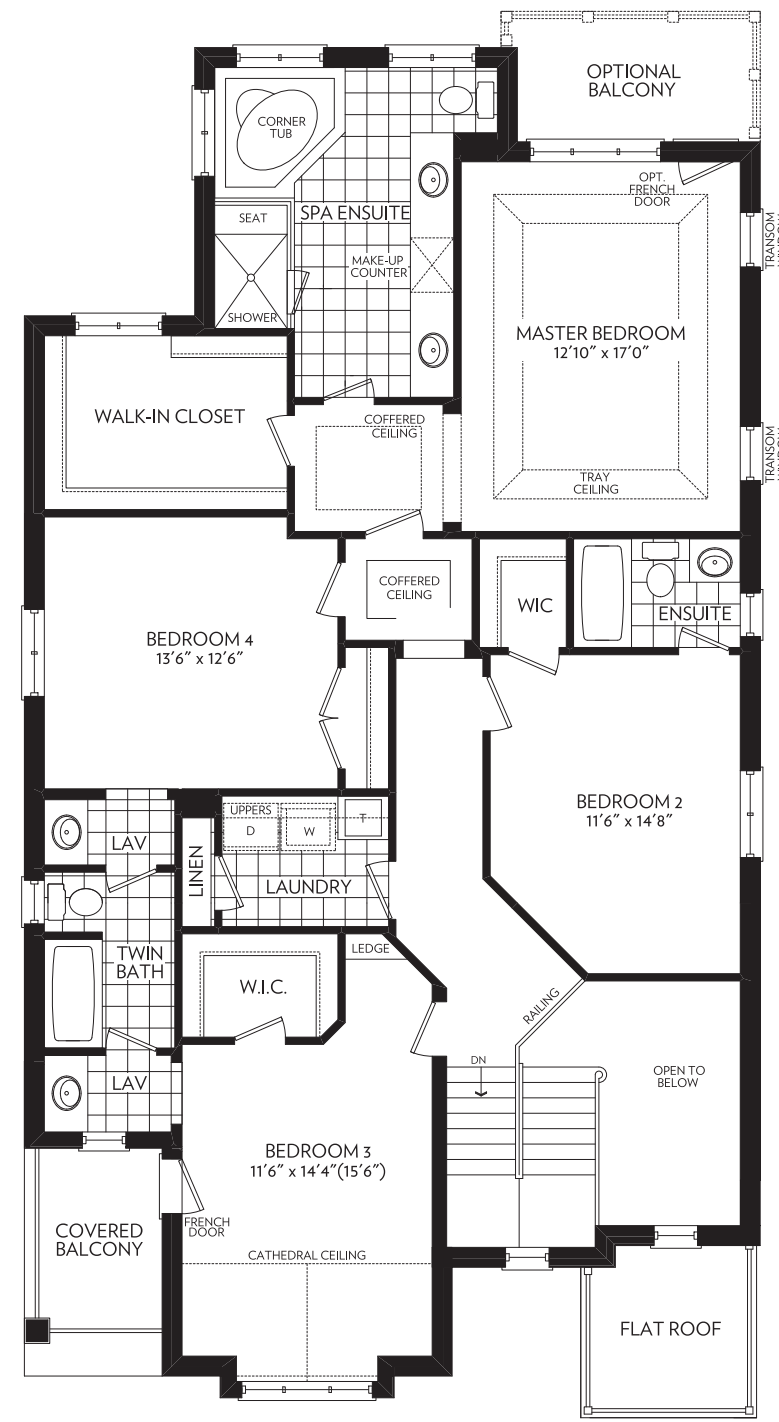
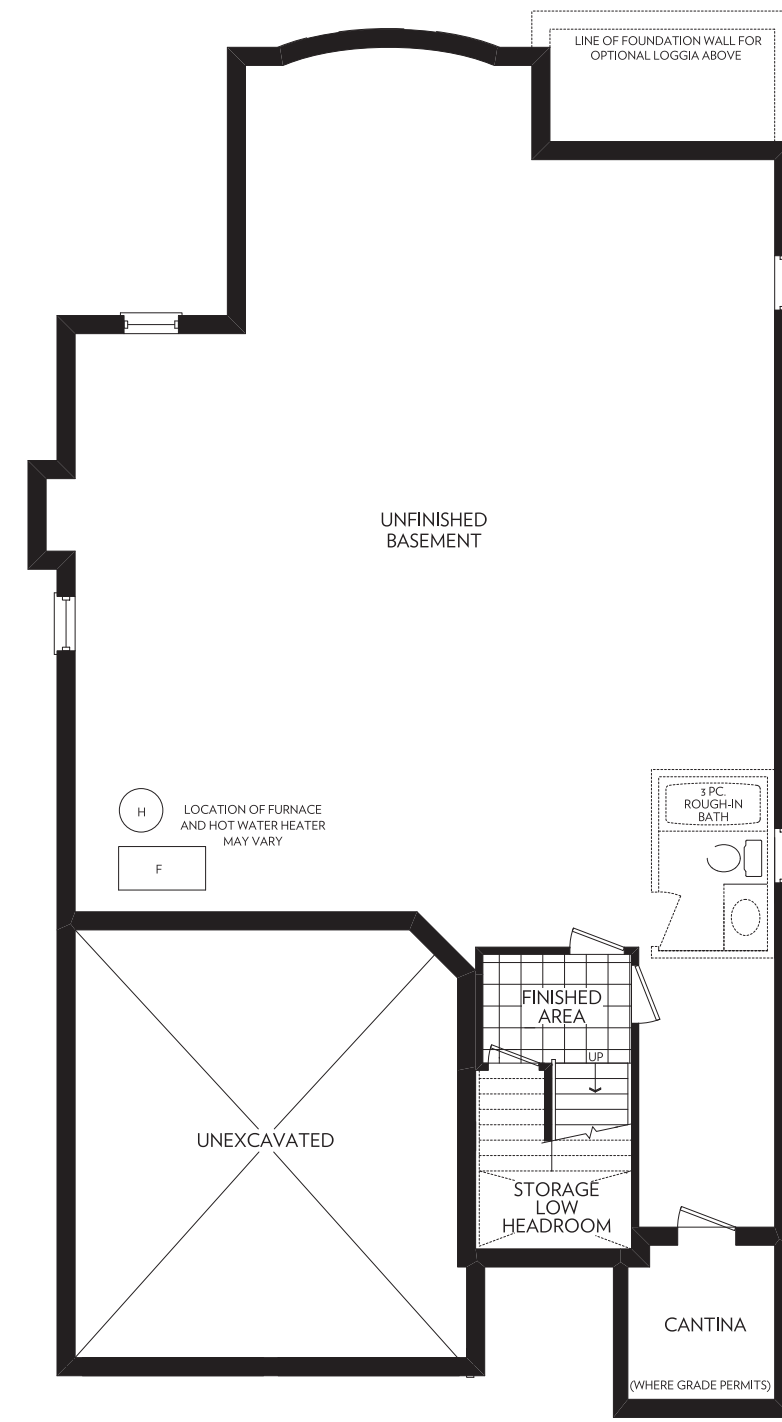


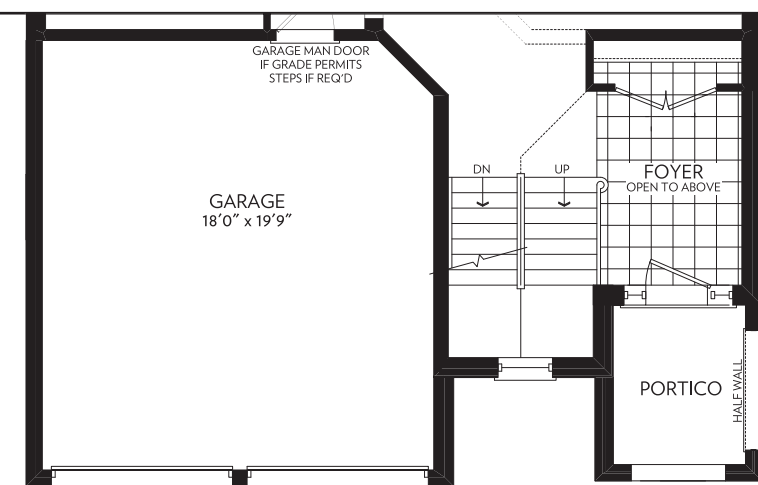
GROUND FLOOR
ELEVATION A



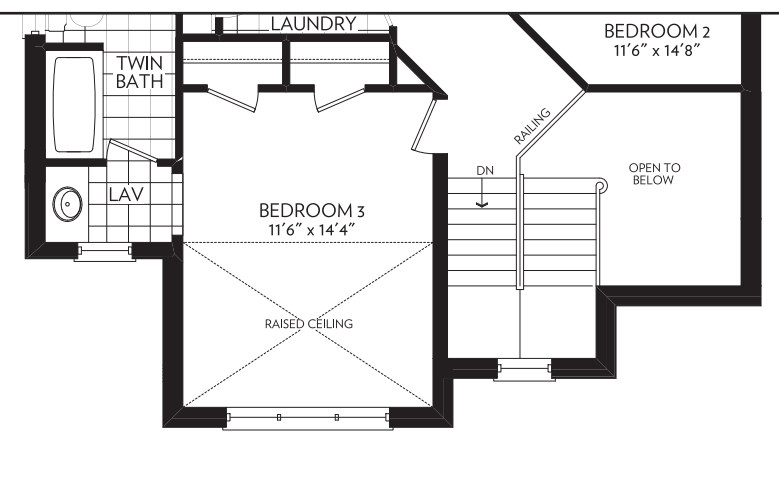
SECOND FLOOR
ELEVATION A



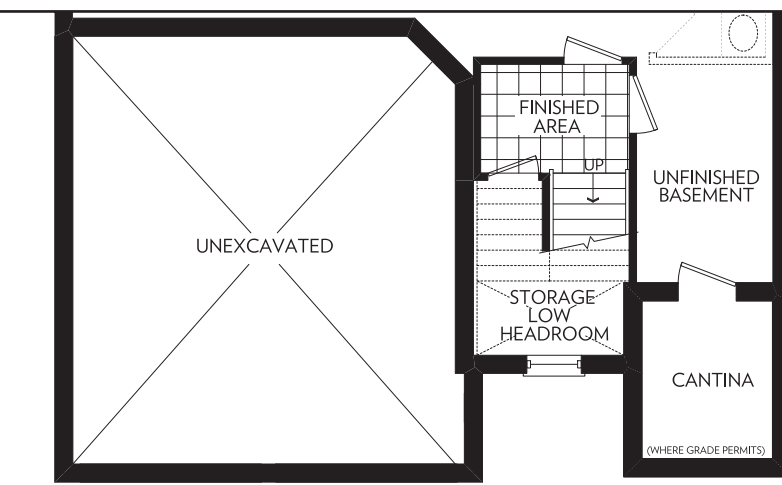
BASEMENT
ELEVATION A



GROUND FLOOR PARTIAL
ELEVATION B



SECOND FLOOR PARTIAL
ELEVATION B



BASEMENT PARTIAL
ELEVATION B

ELEVATION A - 3214 SQ. FT.



ELEVATION B - 3151 SQ. FT.

