

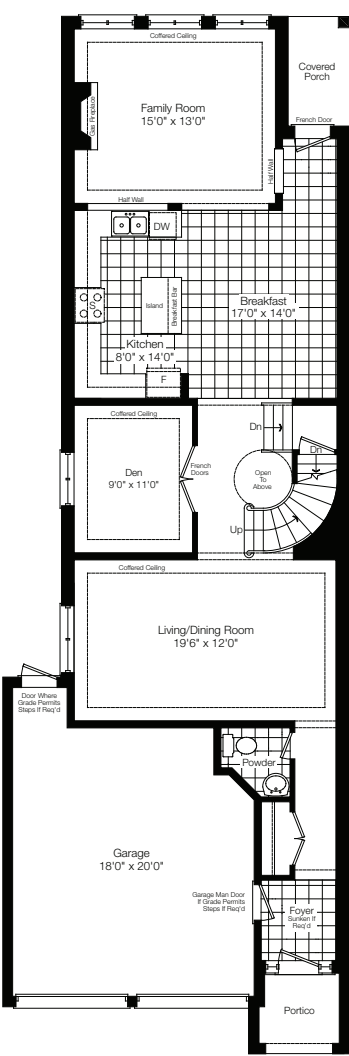
PORT ROYAL

Elev. A 2715 sq. ft.

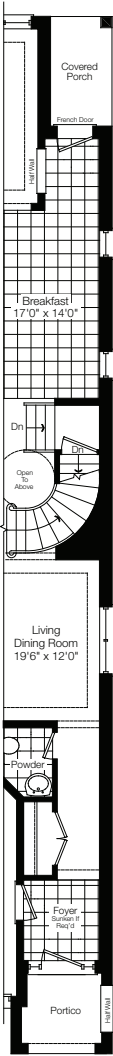
Elev. B 2711 sq. ft.

Elev. A opt. end condition 2724 sq. ft.

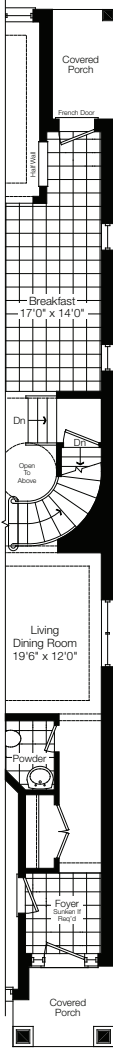
Elev. B opt. end condition 2720 sq. ft.



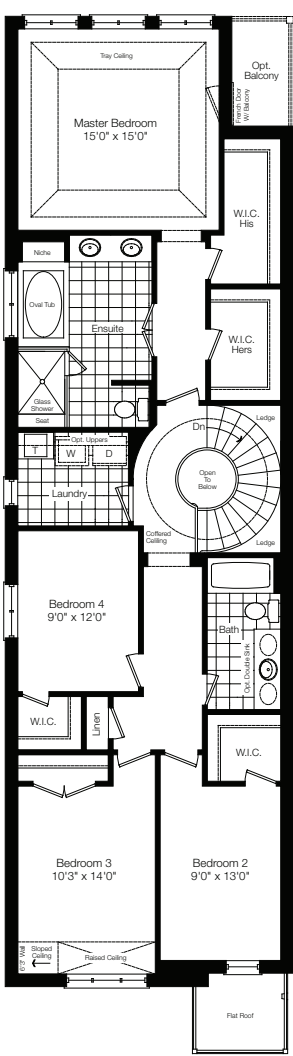
Ground Floor Elev. 'A'



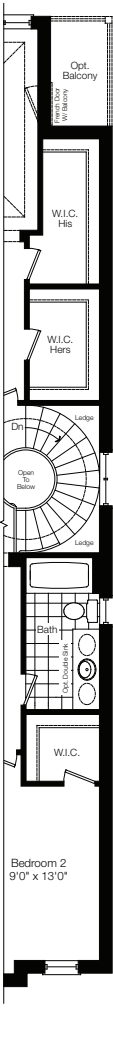
Partial Ground Floor Elev. 'A' End Condition



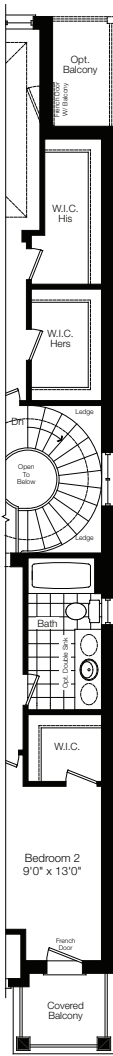
Partial Ground Floor Elev. 'B' End Condition



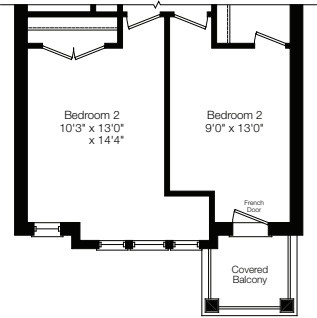
Second Floor Elev. 'A'



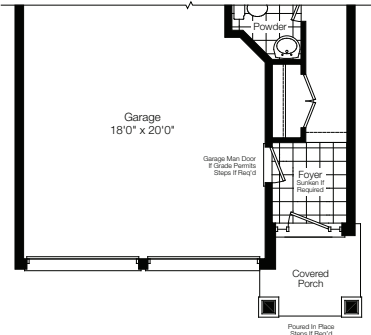
Partial Second Floor Elev. 'A' End Condition



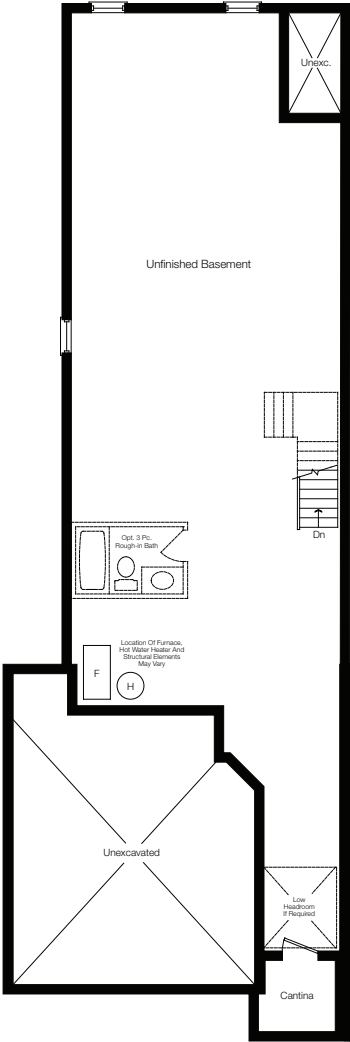
Partial Second Floor Elev. 'B' End Condition



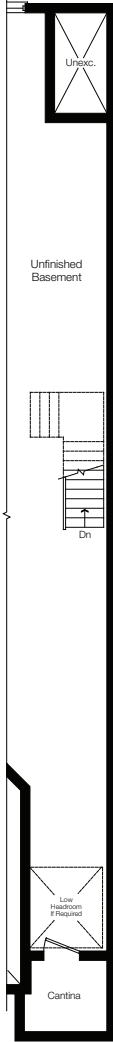
Partial Second Floor Elev. 'B'



Partial Ground Floor Elev. 'B'



Basement Floor Elev. 'A' & 'B'



Partial Basement Floor Elev. 'A' & 'B' End Condition