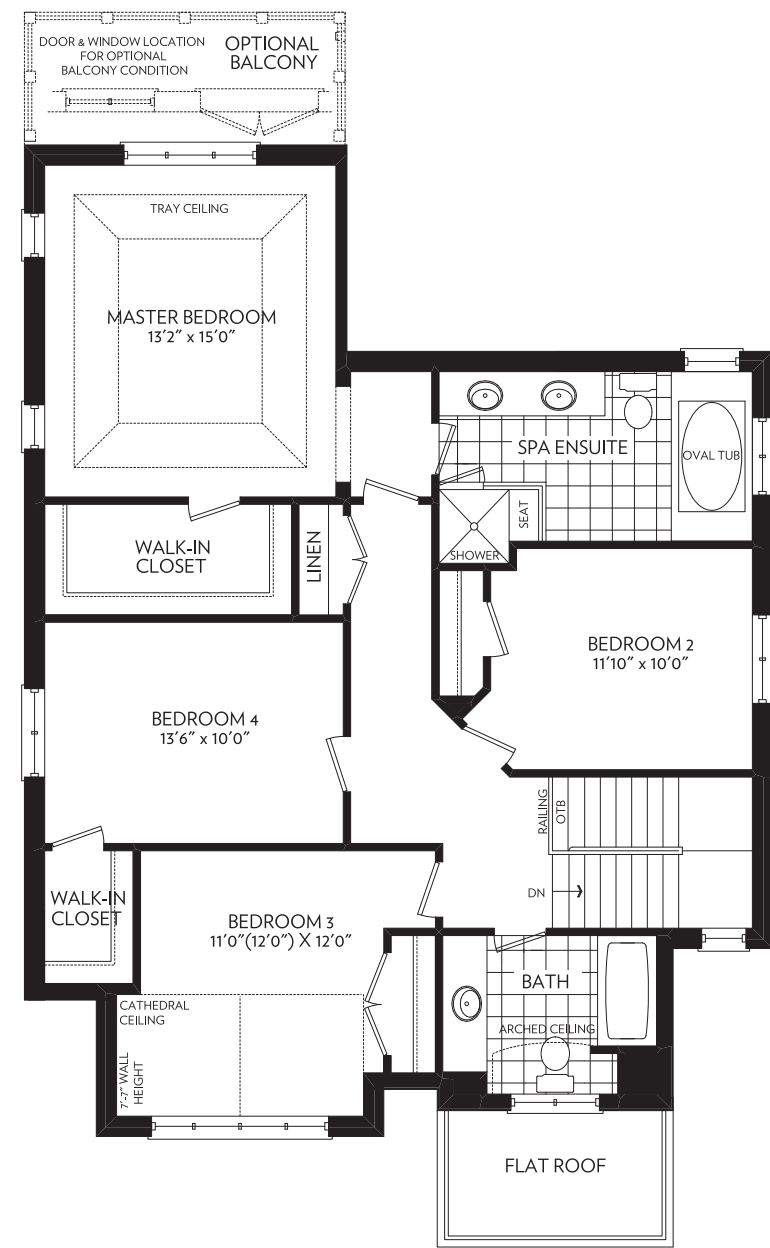
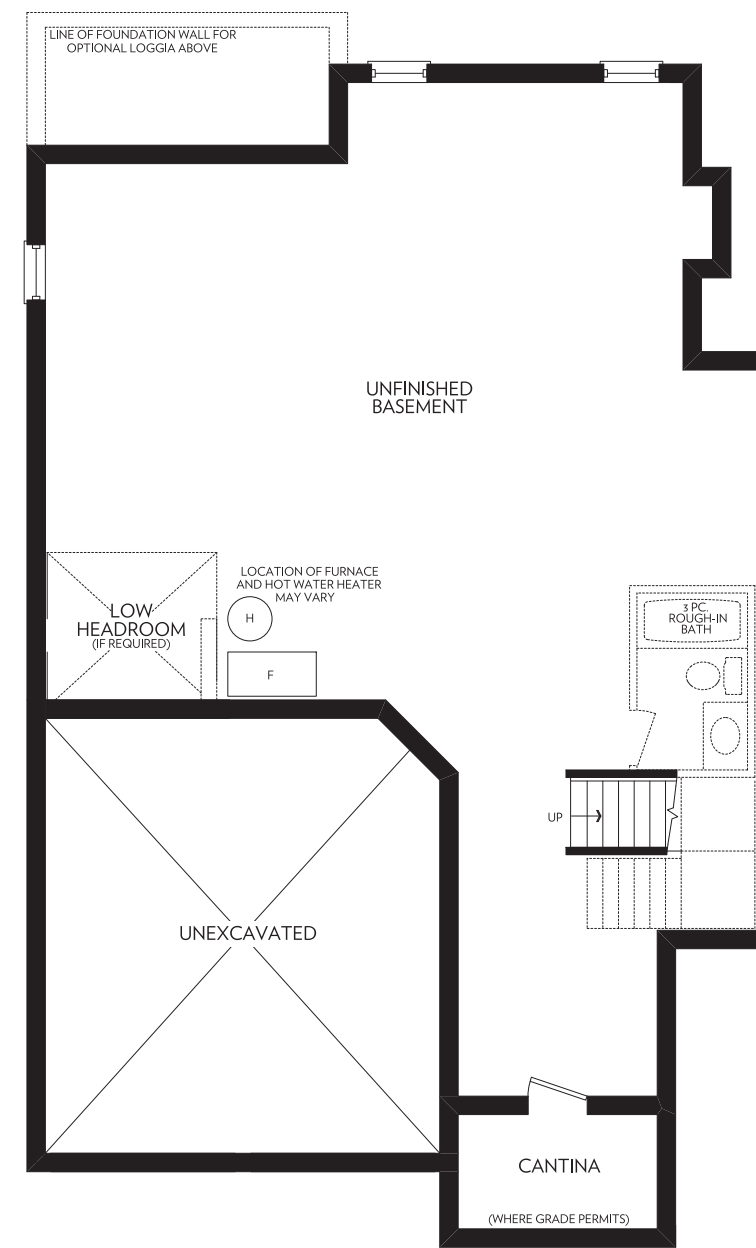


GROUND FLOOR  
ELEVATION A

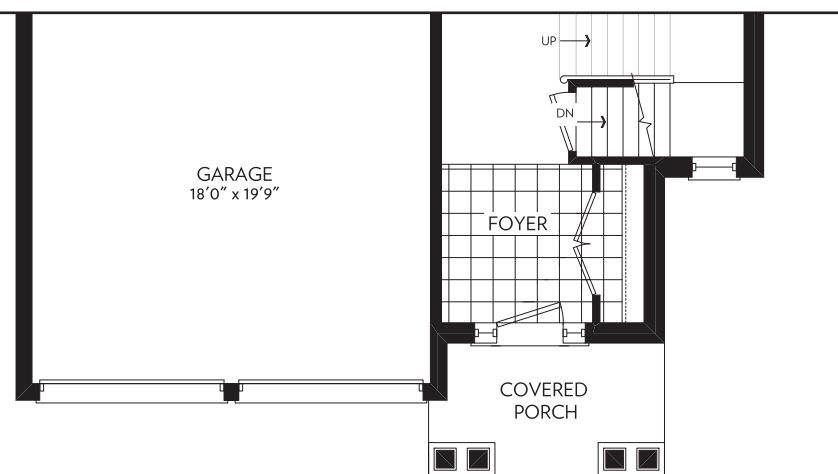


SECOND FLOOR  
ELEVATION A

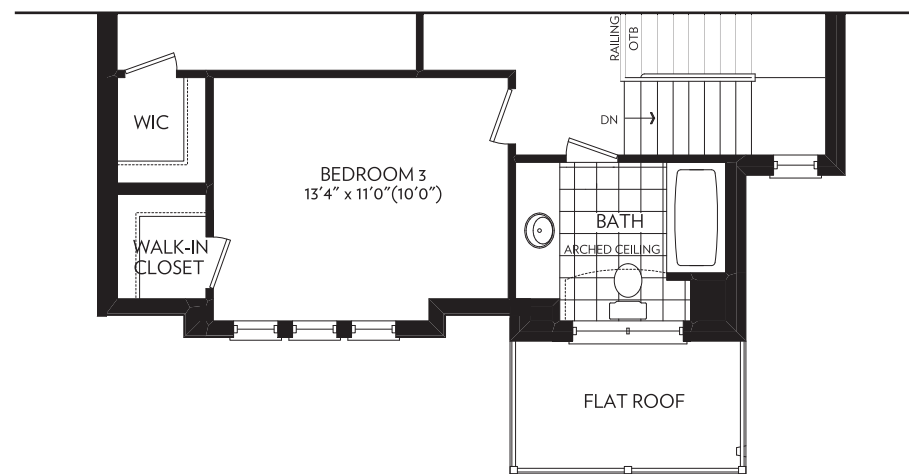


BASEMENT  
ELEVATION A

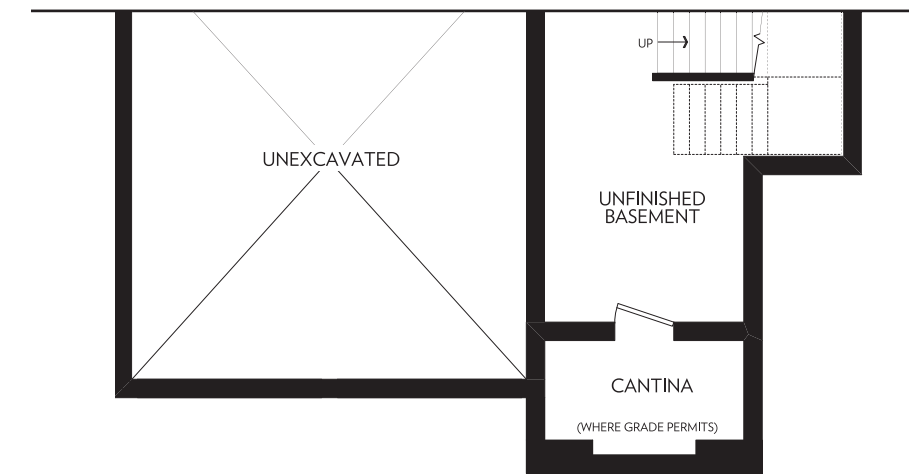
ELEVATION A - 2414 SQ. FT.



GROUND FLOOR PARTIAL  
ELEVATION B



SECOND FLOOR PARTIAL  
ELEVATION B



BASEMENT PARTIAL  
ELEVATION B

ELEVATION B - 2413 SQ. FT.

