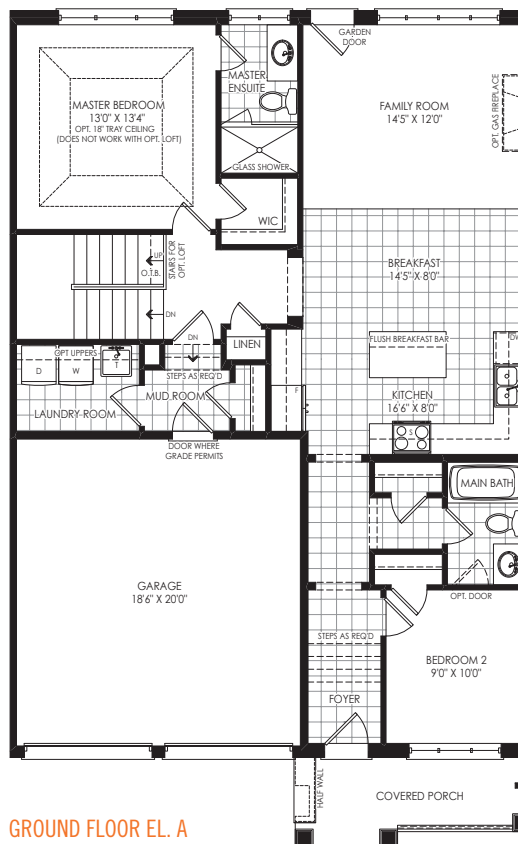


2 | 2

(Includes 336 sq.ft. of finished space in the basement)

End Condition with Optional Loft: **A** 2223 sq.ft. | **B** 2223 sq.ft.



GROUND FLOOR EL. A

Dimensions, specifications, floor plan layouts, window sizes and materials are approximate only, may vary, and are subject to change as provided in the Agreement of Purchase & Sale. Square footage varies according to architectural style. Actual usable floor space may vary from the stated floor area. Plans may be reversed. All interior & exterior home design illustrations are artist's concepts. TH-02. E.&O.E.



The Sunshine

2  | 2 

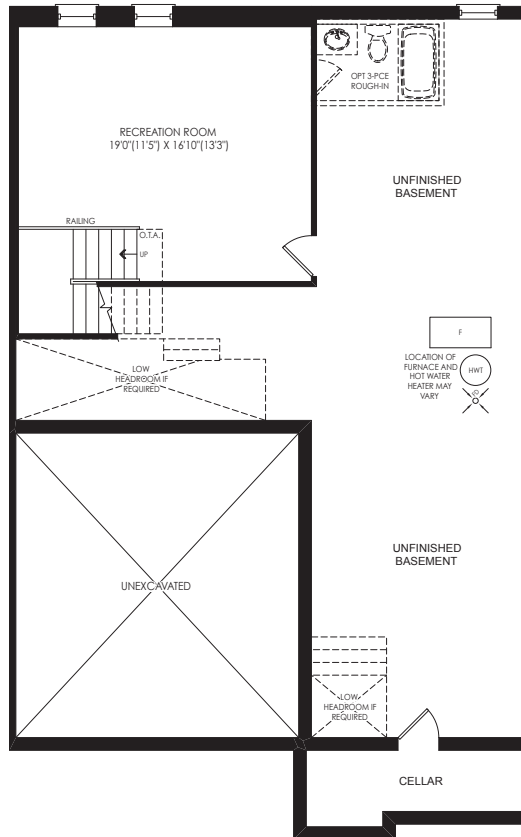
A 1589 sq.ft. | **B** 1589 sq.ft.

(Includes 336 sq.ft. of finished space in the basement)

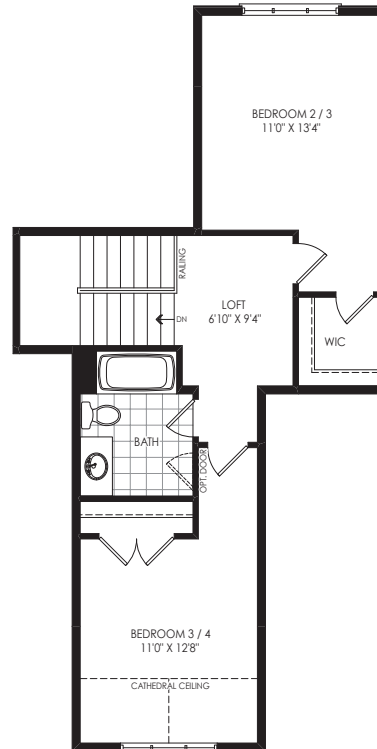
Optional Loft: **A** 2254 sq.ft. | **B** 2254 sq.ft. End Condition: **A** 1638 sq.ft. | **B** 1638 sq.ft.

End Condition with Optional Loft: **A** 2223 sq.ft. | **B** 2223 sq.ft.

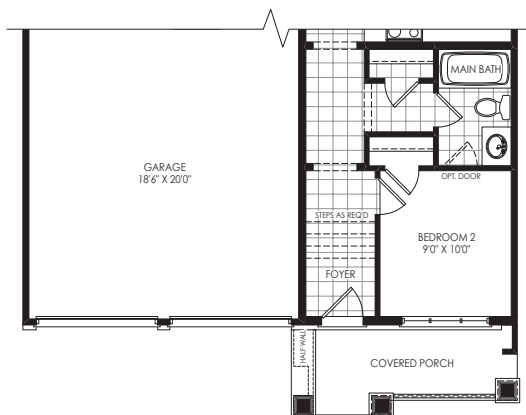
OTHER PARTIALS AND PLANS



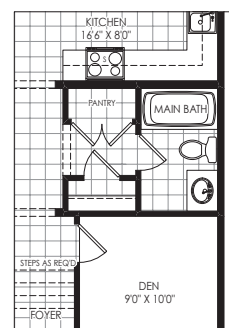
BASEMENT EL. A & B



OPT. LOFT EL. A & B



PARTIAL GROUND FLOOR EL. B



PARTIAL OPT. GROUND FLOOR EL. A & B



The Sunshine

2  | 2 

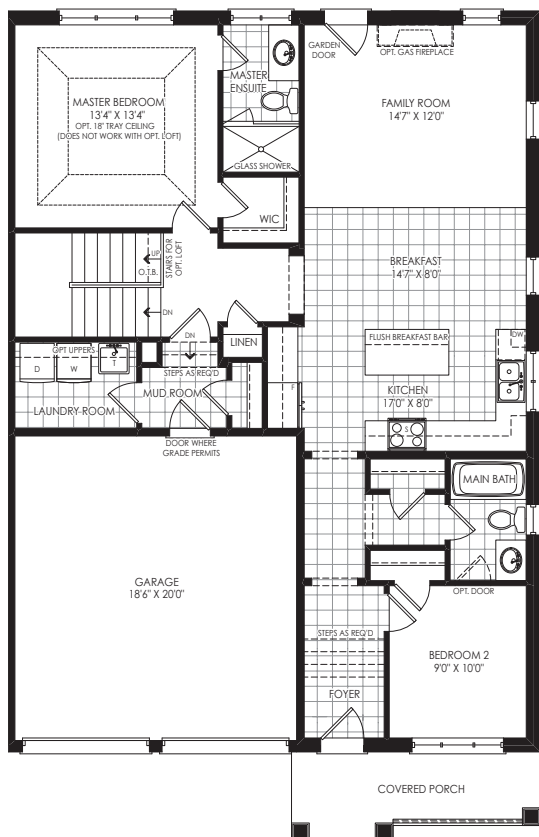
A 1589 sq.ft. | **B** 1589 sq.ft.

(Includes 336 sq.ft. of finished space in the basement)

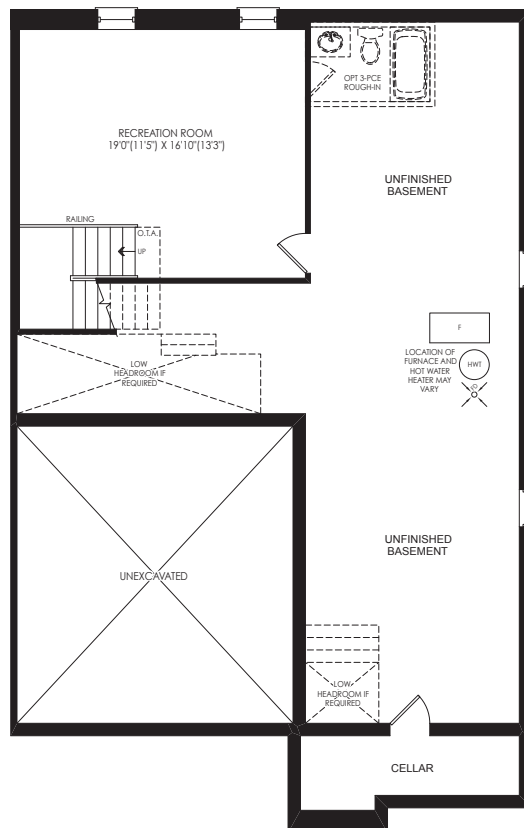
Optional Loft: **A** 2254 sq.ft. | **B** 2254 sq.ft. End Condition: **A** 1638 sq.ft. | **B** 1638 sq.ft.

End Condition with Optional Loft: **A** 2223 sq.ft. | **B** 2223 sq.ft.

OTHER PARTIALS AND PLANS



END CONDITION GROUND FLOOR EL. A



END CONDITION BASEMENT EL. A & B



The Sunshine

2  | 2 

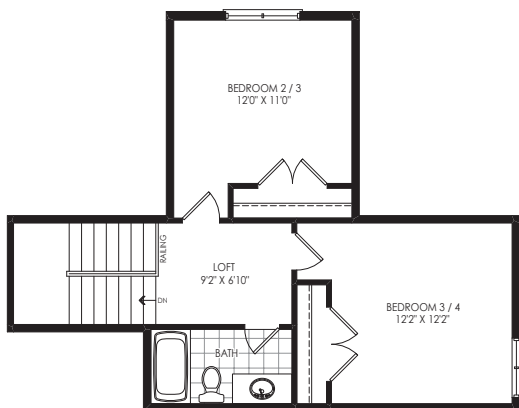
A 1589 sq.ft. | **B** 1589 sq.ft.

(Includes 336 sq.ft. of finished space in the basement)

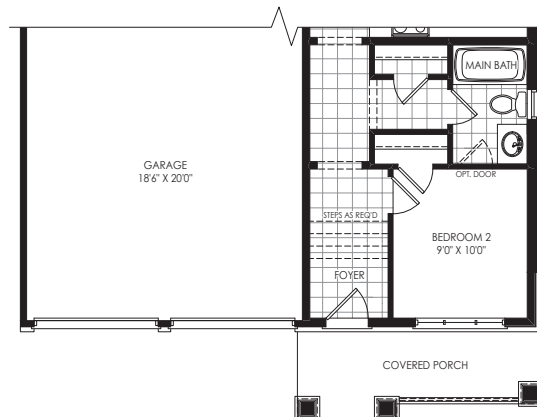
Optional Loft: **A** 2254 sq.ft. | **B** 2254 sq.ft. End Condition: **A** 1638 sq.ft. | **B** 1638 sq.ft.

End Condition with Optional Loft: **A** 2223 sq.ft. | **B** 2223 sq.ft.

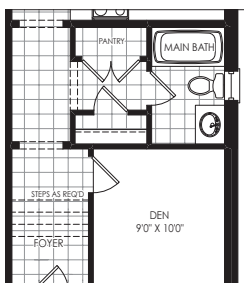
OTHER PARTIALS AND PLANS



END CONDITION OPT. LOFT EL. A & B



END CONDITION PARTIAL GROUND FLOOR EL. B



END CONDITION PARTIAL OPT. GROUND FLOOR EL. A & B

