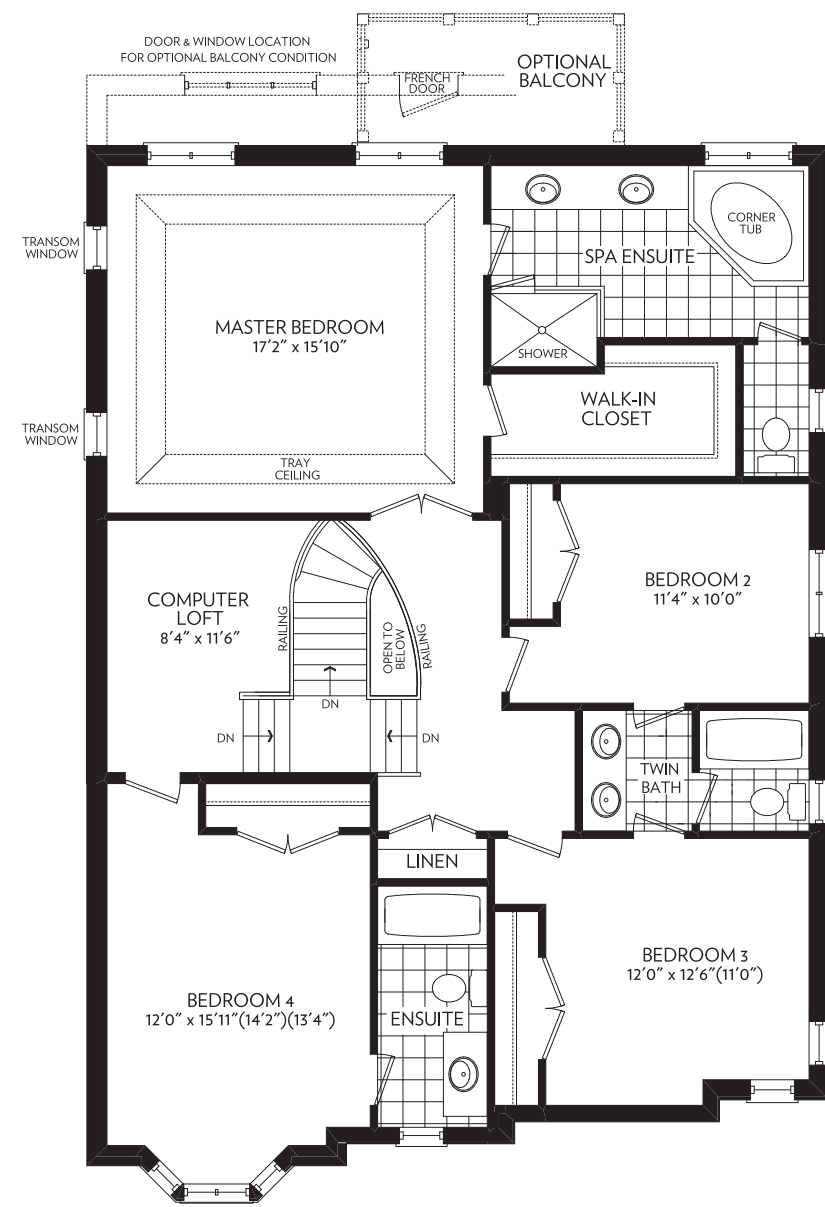
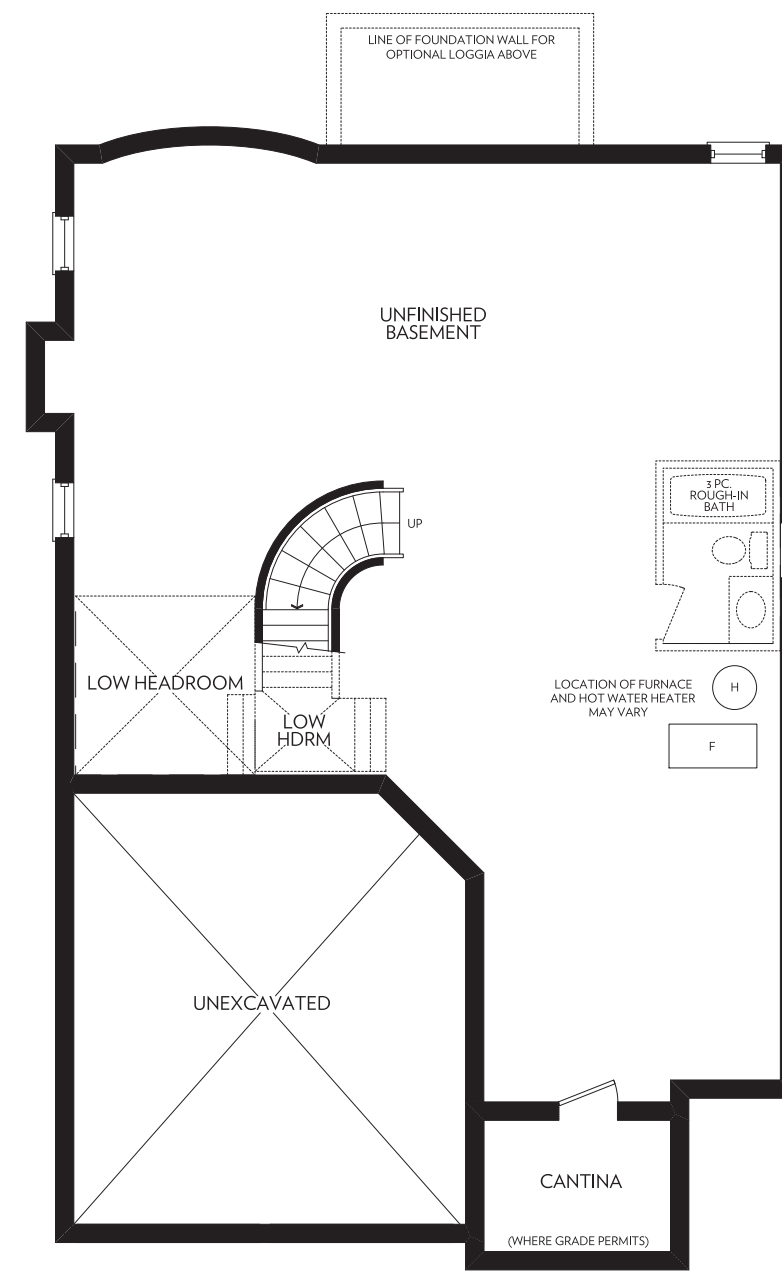


GROUND FLOOR  
ELEVATION A

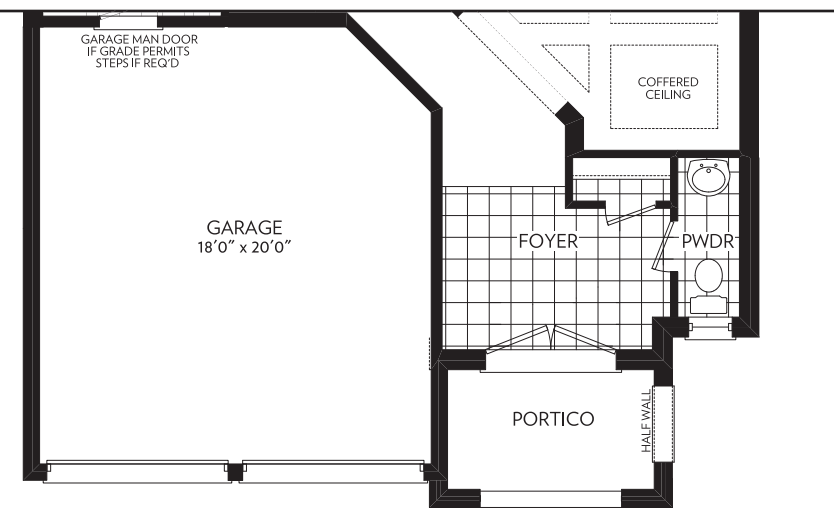


SECOND FLOOR  
ELEVATION A

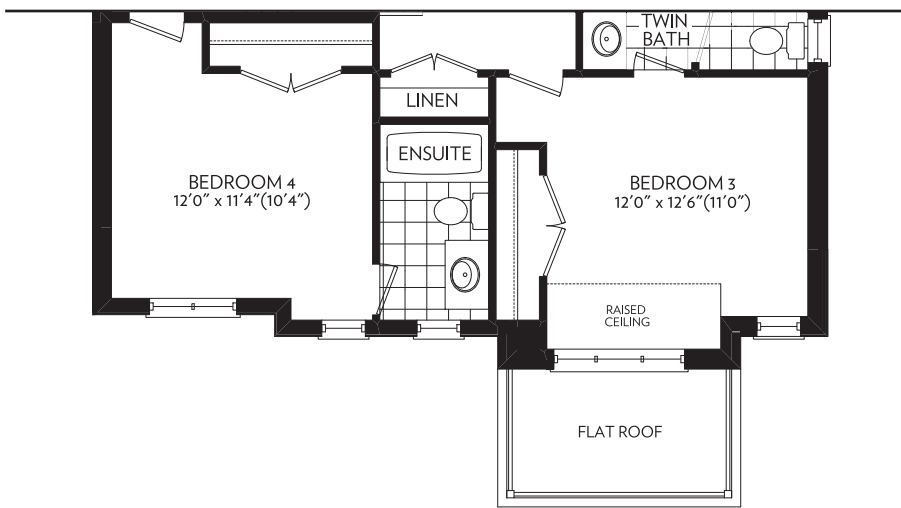


BASEMENT  
ELEVATION A & B

ELEVATION A - 2767 SQ. FT.



GROUND FLOOR PARTIAL  
ELEVATION B



SECOND FLOOR PARTIAL  
ELEVATION B

ELEVATION B - 2712 SQ. FT.

